

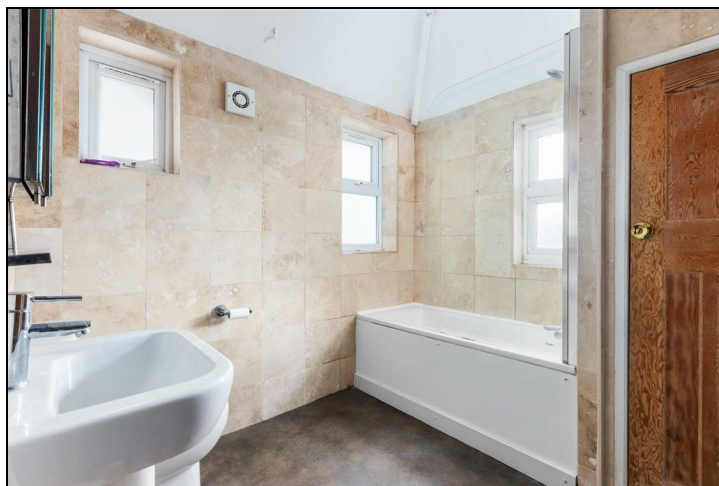
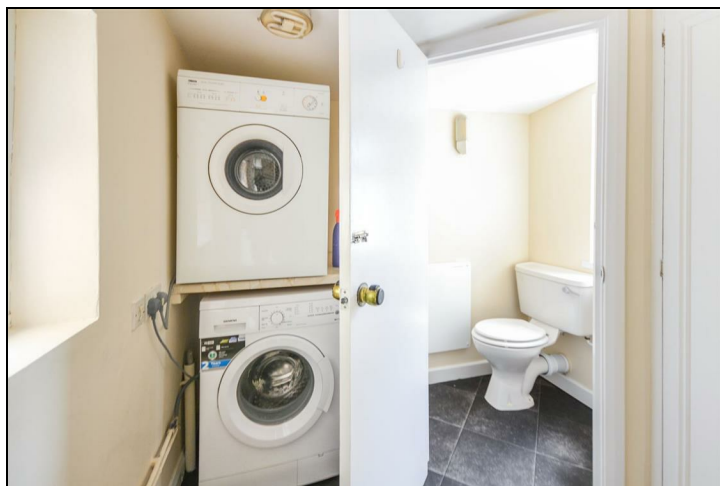
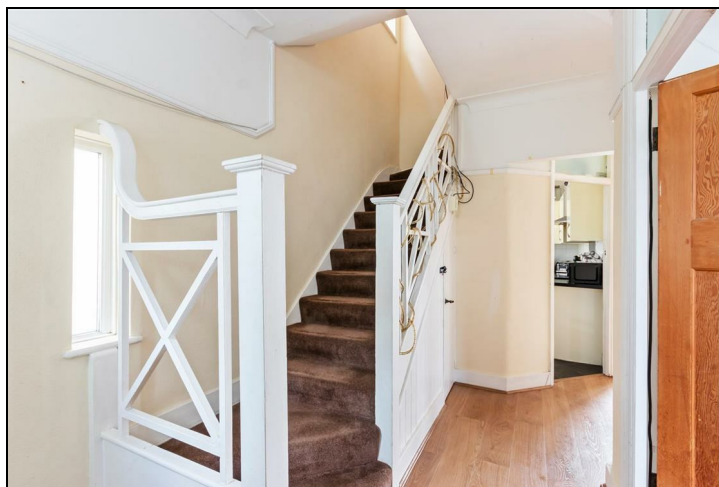
## Grasmere Avenue Merton Park, SW19 3DY

**£2,300 PCM**



THREE BEDROOM house with OFF STREET PARKING located just a 5 MINUTE WALK FROM MORDEN UNDERGROUND (zone 4) and close to Poplar Primary School. The house consists of two reception rooms, separate kitchen with utility area and WC to the ground floor with wood laminate flooring. Two double bedrooms, one single and large family bathroom to the first floor, and a spacious usable loft room to the second floor ideal for working from home. Great sized garden with side access. EPC E. Council tax band E.





- Three bedrooms
- Ground floor WC
- Off street parking
- Large garden with side access
- Additional loft room - ideal office
- First months advance rent
- Damages deposit = 5 weeks rent
- Holding deposit = one weeks rent
- EPC band E
- Council tax band E

